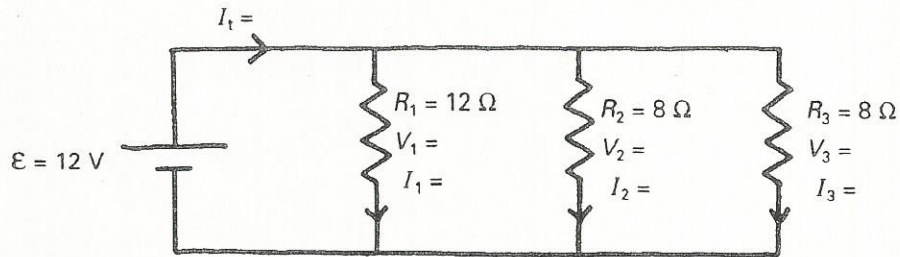


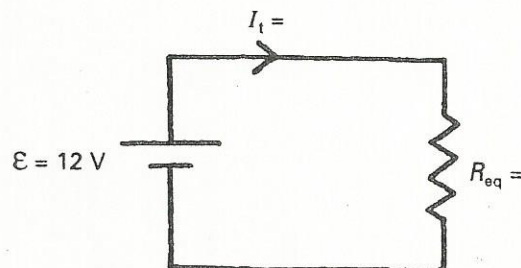
Parallel Circuits

Solve for all unknowns :

I. Circuit composed of three parallel resistors

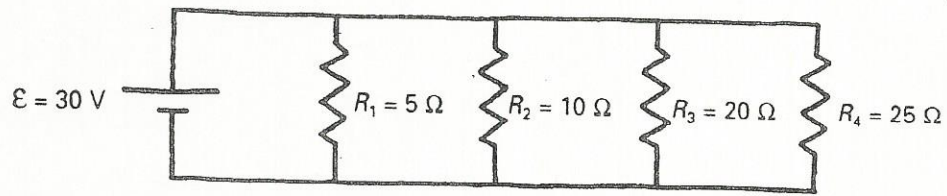


a) A complete circuit



b) A simple equivalent circuit

2. Do a complete analysis of the following circuit, that is, determine the values for voltage, current and equivalent resistance for the circuit and draw the simple equivalent circuit.



Suggestion: Enter the values on the diagram as you obtain them.