

1. Six representations are given below.

A. $f(x)$ = the image of an element is obtained by adding three to the element.

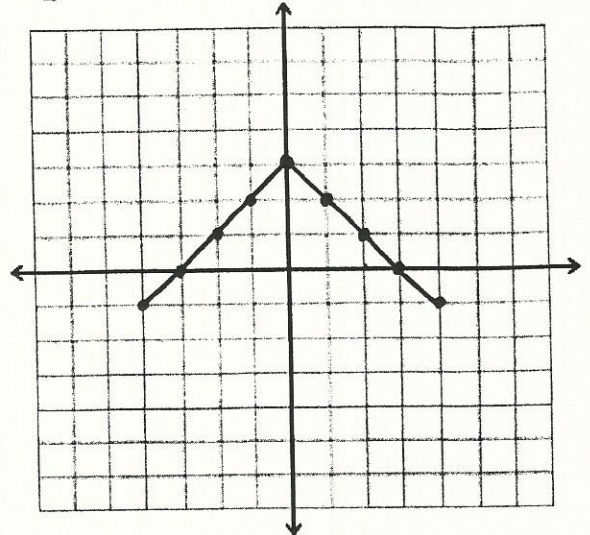
C. $h(x) = 3 - |x|$

D.

x	$i(x)$
-4	7
-3	6
-2	5
-1	4
0	3
1	2
2	1
3	0

E. $j(x) = 3 - x$

B. $g(x)$



F.

x	$K(x)$
-4	-1
-3	0
-2	1
-1	2
0	3
1	2
2	1
3	0
4	-1

Three of these representations correspond to the same function f_1 , and two of them correspond to another function f_2 .

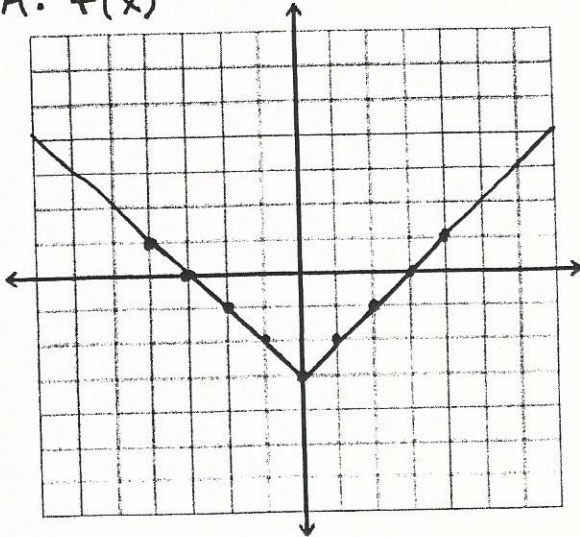
Indicate which representations correspond to each function.

f_1 : _____

f_2 : _____

2. Six representations are given below.

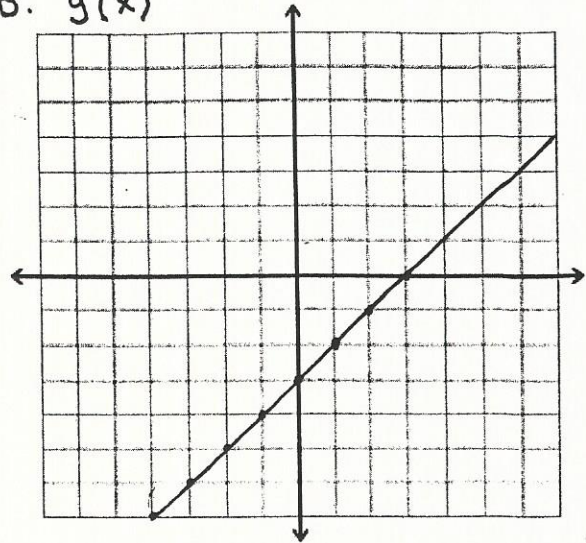
A. $f(x)$



C. $\frac{h(x)}{1} = \frac{x-3}{1}$

D. $i(x) = |x| - 3$

B. $g(x)$



E.

x	$j(x)$
-4	1
-3	0
-2	-1
-1	-2
0	-3
1	-2
2	-1

F. $k(x)$ = the image of an element is obtained by subtracting three from the square of an element.

Three of these representations correspond to the same function f_1 , and two of them correspond to another function f_2 .
Indicate which representations correspond to each function.

f_1 : _____

f_2 : _____