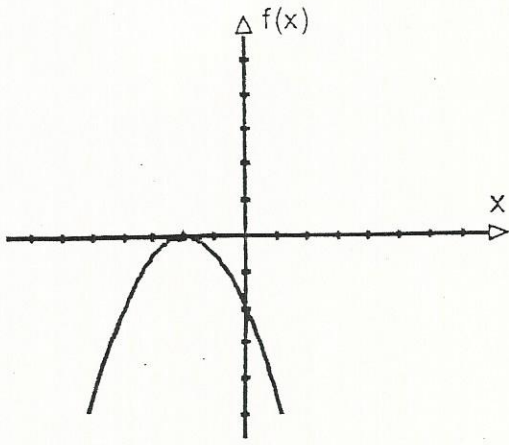
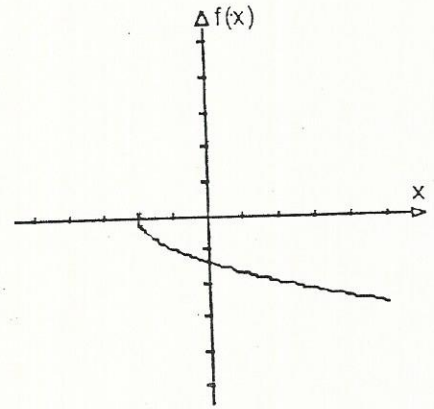


1. Consider the following statements A - O. After examining the eight graphs which follow, print each letter next to each graph to which it corresponds. The same letter may definitely be used more than once!

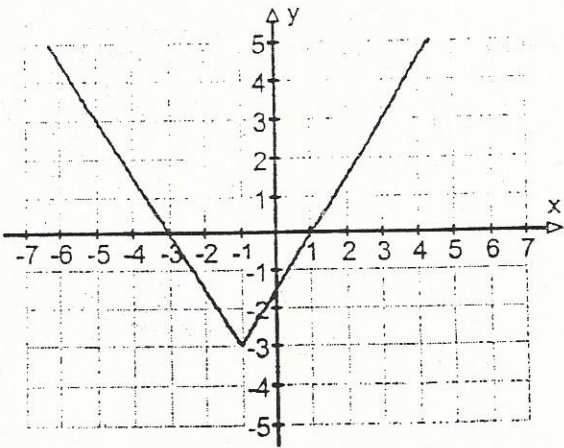
- A. It has a maximum.
- B. It has only one zero, which is negative.
- C. It is decreasing over its entire domain.
- D. It is decreasing if $x \in [-2, \infty]$.
- E. The function is negative if $x \in [0, 2]$.
- F. The equation of the axis of symmetry is $x = h$ and $h > 0$.
- G. The function has two zeros, one of which is the y-intercept.
- H. It has two zeros, one which is negative and one positive.
- I. It is increasing over its entire domain.
- J. It is increasing if $x \in (-\infty, -2]$.
- K. The range of the function is $[-3, \infty)$.
- L. The equation of the axis of symmetry is $x = h$ and $h < 0$.
- M. The equation of the axis of symmetry is $x = h$ and $h = 0$.
- N. The range of this function is $(-\infty, 2]$.
- O. The domain of this function is $[-2, \infty)$.



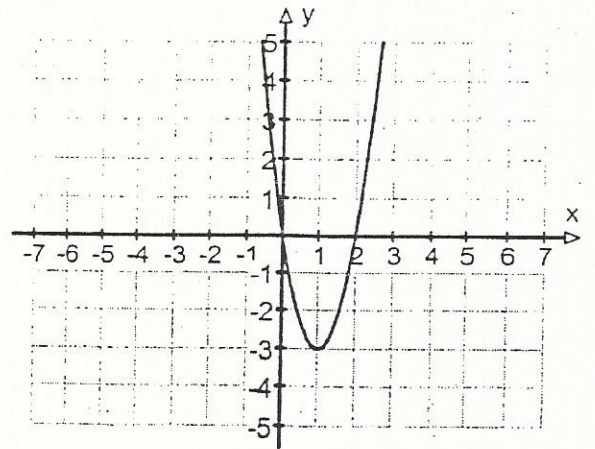
1. _____



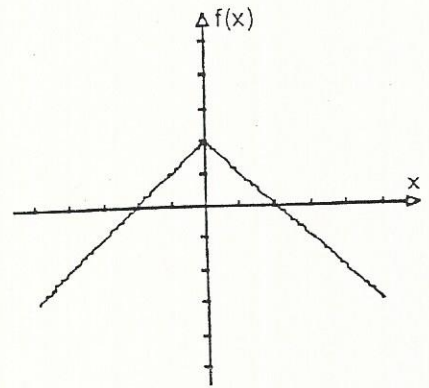
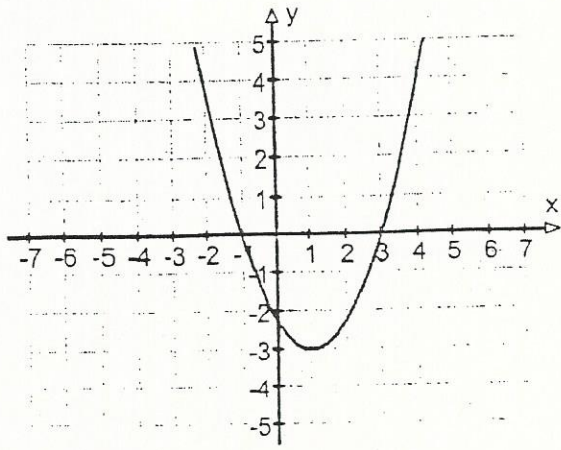
2. _____



3. _____

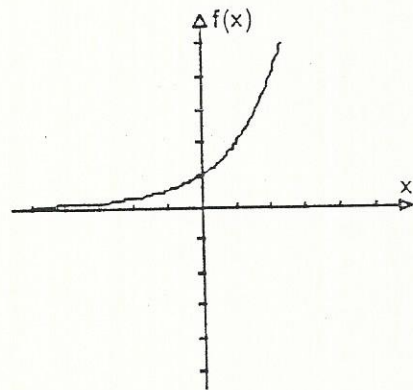
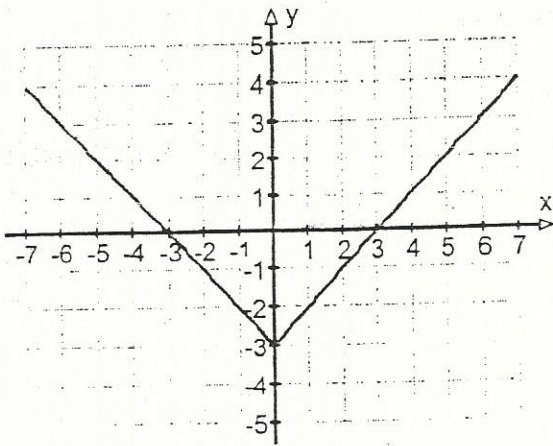


4. _____



5. _____

6. _____



7. _____

8. _____

2. Six representations are given below.

A $k(x)$: The function used to calculate the length of each side of a cube whose volume is equal to x metres cubed.

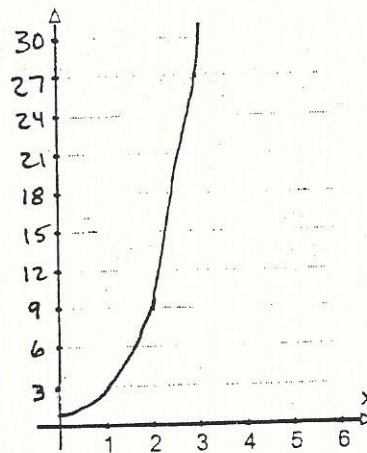
B

x	$g(x)$
0	0
1	1
8	2
27	3
64	4

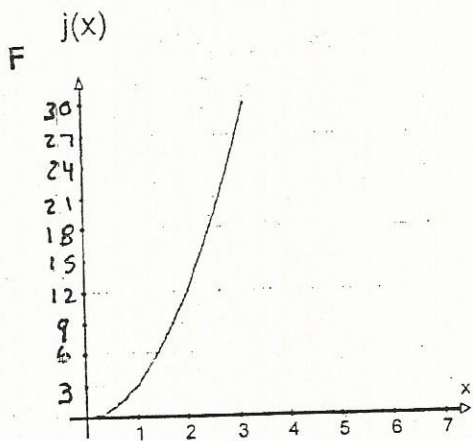
C

x	$i(x)$
0	1
1	3
2	9
3	27
4	81

D $f(x)$



E $h(x) = 3^x$



Three of these representations correspond to the same function f_1 and two of them correspond to another function f_2 .

Indicate which representations correspond to each function.

f_1 : _____

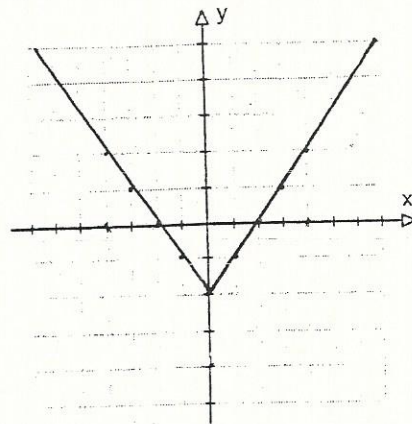
f_2 : _____

3. Six representations are given below.

A

$$k(x) = |x| - 2$$

B $j(x)$



C

x	i(x)
-4	2
-3	1
-2	0
-1	-1
0	-2
1	-1
2	0
3	1

D

x	h(x)
-4	-6
-3	-5
-2	-4
-1	-3
0	-2
1	-1
2	0
3	1

E $\frac{f(x)}{1} = x - 2$

F $g(x)$ = The image of an element is obtained by subtracting 2 from the square of this element.

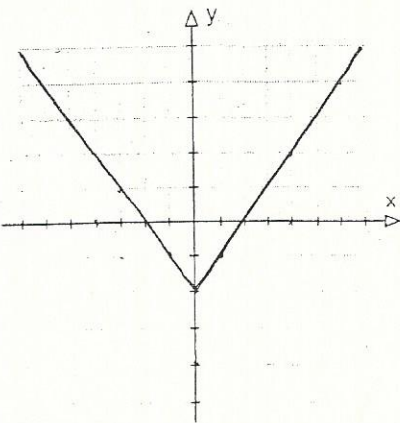
Three of these representations correspond to the same function f_1 and two of them correspond to another function f_2 .

Indicate which representations correspond to each function.

f_1 : _____

f_2 : _____

Six representations are given below.

<p>A</p> $f(x) = x - 2$	<p>B</p> <table border="1" style="margin-left: auto; margin-right: auto;"> <thead> <tr> <th>x</th> <th>g(x)</th> </tr> </thead> <tbody> <tr><td>-3</td><td>-5</td></tr> <tr><td>-2</td><td>-4</td></tr> <tr><td>-1</td><td>-3</td></tr> <tr><td>0</td><td>-2</td></tr> <tr><td>1</td><td>-1</td></tr> <tr><td>2</td><td>0</td></tr> <tr><td>3</td><td>1</td></tr> <tr><td>4</td><td>2</td></tr> </tbody> </table>	x	g(x)	-3	-5	-2	-4	-1	-3	0	-2	1	-1	2	0	3	1	4	2	<p>C</p> <table border="1" style="margin-left: auto; margin-right: auto;"> <thead> <tr> <th>x</th> <th>h(x)</th> </tr> </thead> <tbody> <tr><td>-3</td><td>1</td></tr> <tr><td>-2</td><td>0</td></tr> <tr><td>-1</td><td>-1</td></tr> <tr><td>0</td><td>-2</td></tr> <tr><td>1</td><td>-1</td></tr> <tr><td>2</td><td>0</td></tr> <tr><td>3</td><td>1</td></tr> <tr><td>4</td><td>2</td></tr> </tbody> </table>	x	h(x)	-3	1	-2	0	-1	-1	0	-2	1	-1	2	0	3	1	4	2
x	g(x)																																					
-3	-5																																					
-2	-4																																					
-1	-3																																					
0	-2																																					
1	-1																																					
2	0																																					
3	1																																					
4	2																																					
x	h(x)																																					
-3	1																																					
-2	0																																					
-1	-1																																					
0	-2																																					
1	-1																																					
2	0																																					
3	1																																					
4	2																																					
<p>D</p> <p>$i(x)$ = The image of an element is obtained by subtracting 2 from the square of this element.</p>	<p>E</p> <p style="text-align: center;">$j(x)$</p> 	<p>F</p> $k(x) = x - 2$																																				

Three of these representations correspond to the same function f_1 and two of them correspond to another function f_2 .

Indicate which representations correspond to each function.

f_1 : _____

f_2 : _____