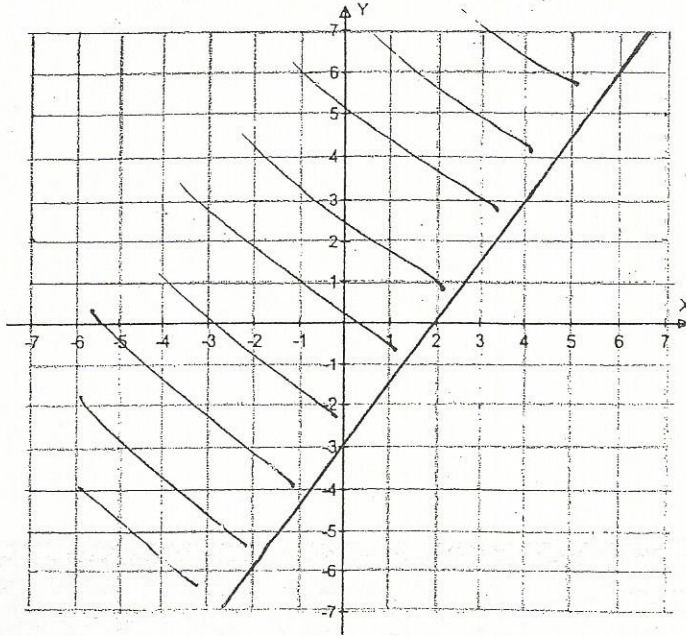


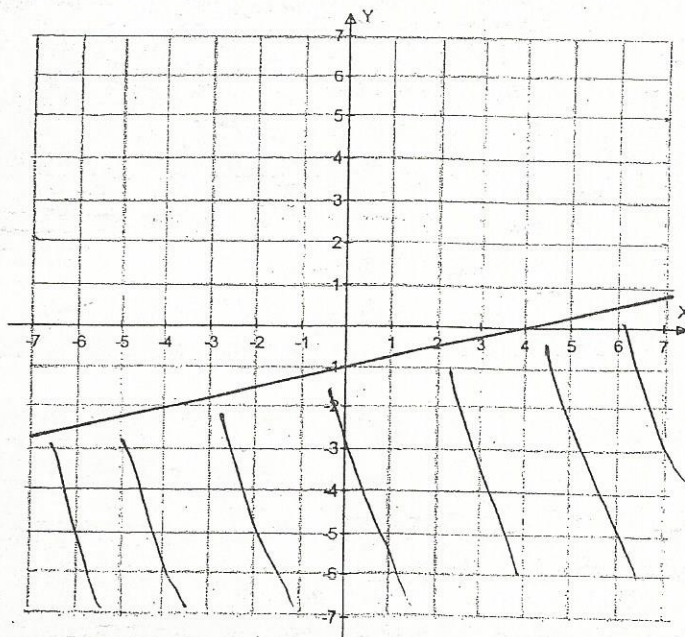
Relations Question Type B

e.g. 1 Use set-builder notation to define the relation illustrated below.

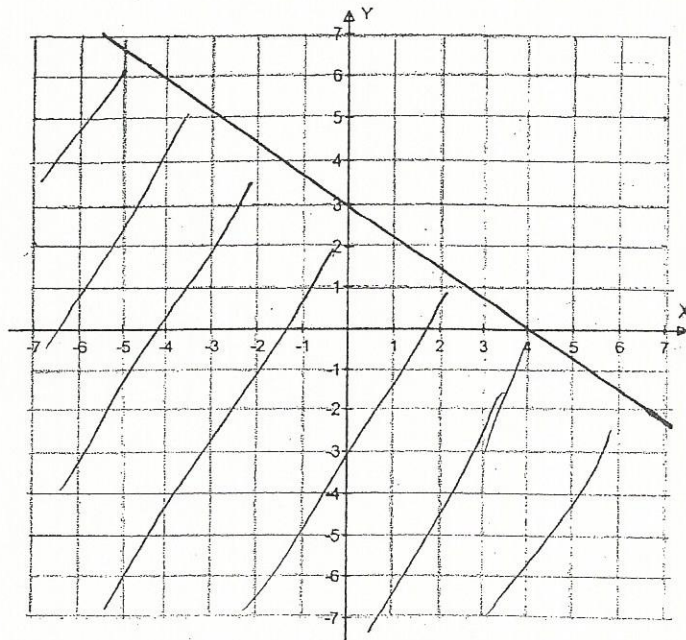


You try:

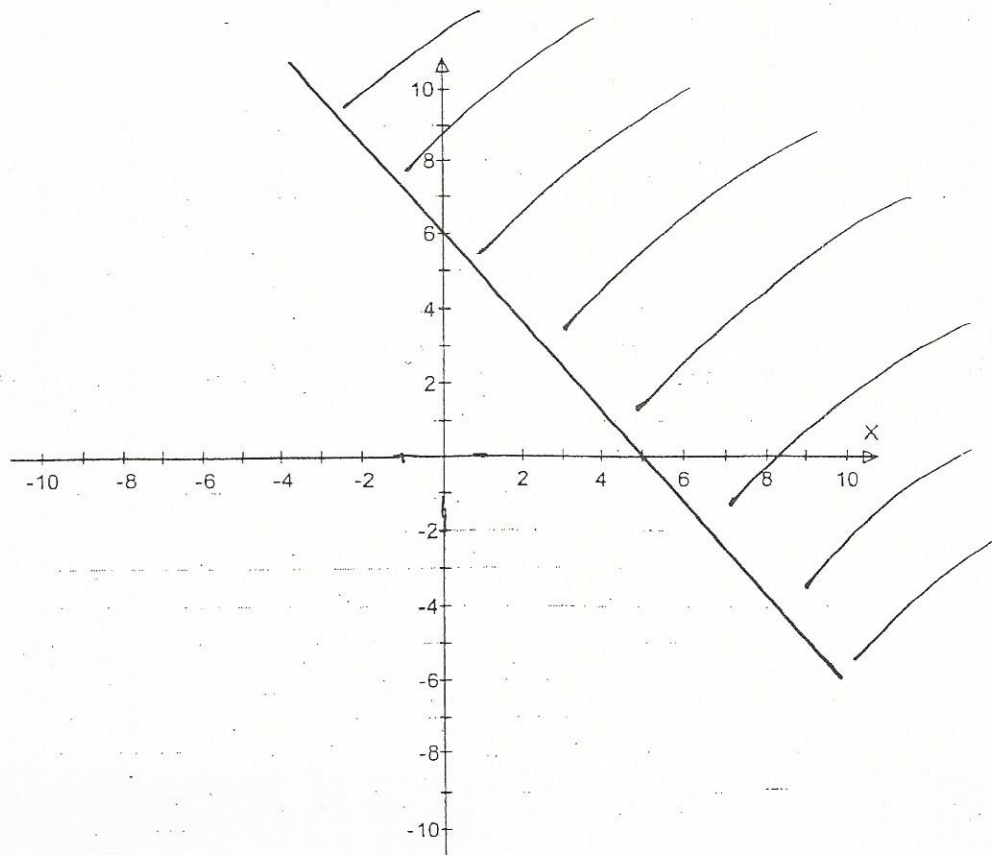
1. Use set-builder notation to define the relation illustrated below.



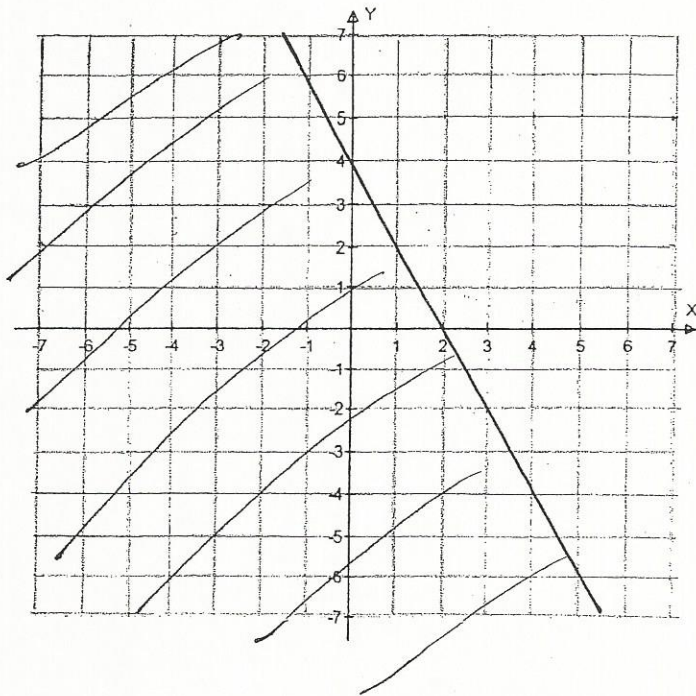
2. Use set-builder notation to define the relation illustrated below.



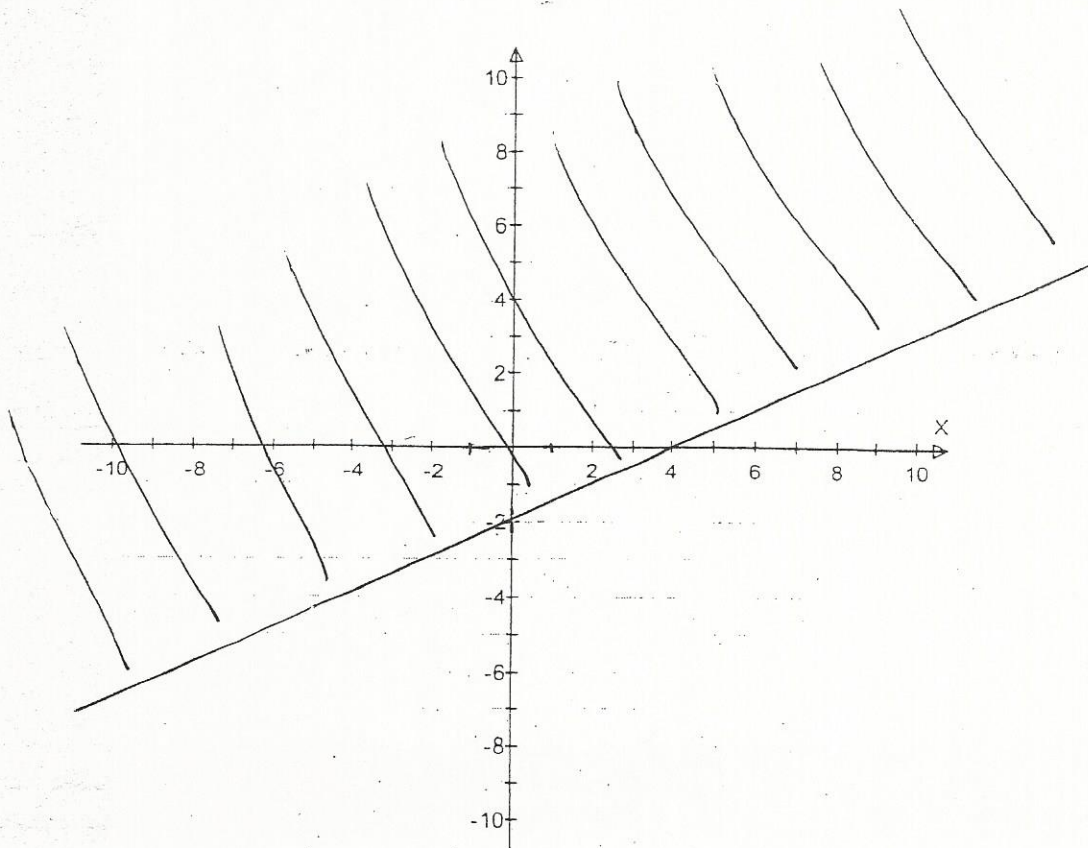
3. Use set-builder notation to define the relation illustrated below.



4. Use set-builder notation to define the relation illustrated below.

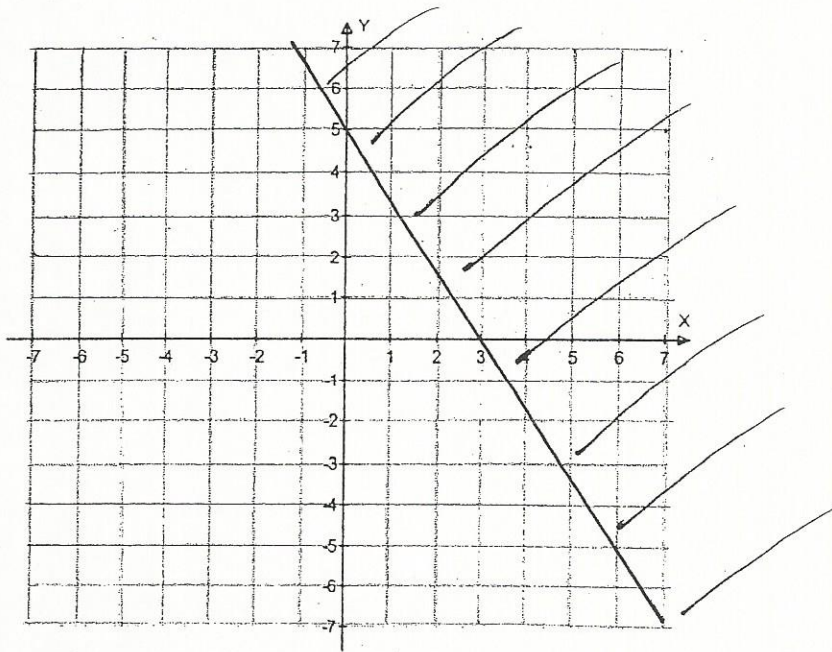


5. Use set-builder notation to define the relation illustrated below.

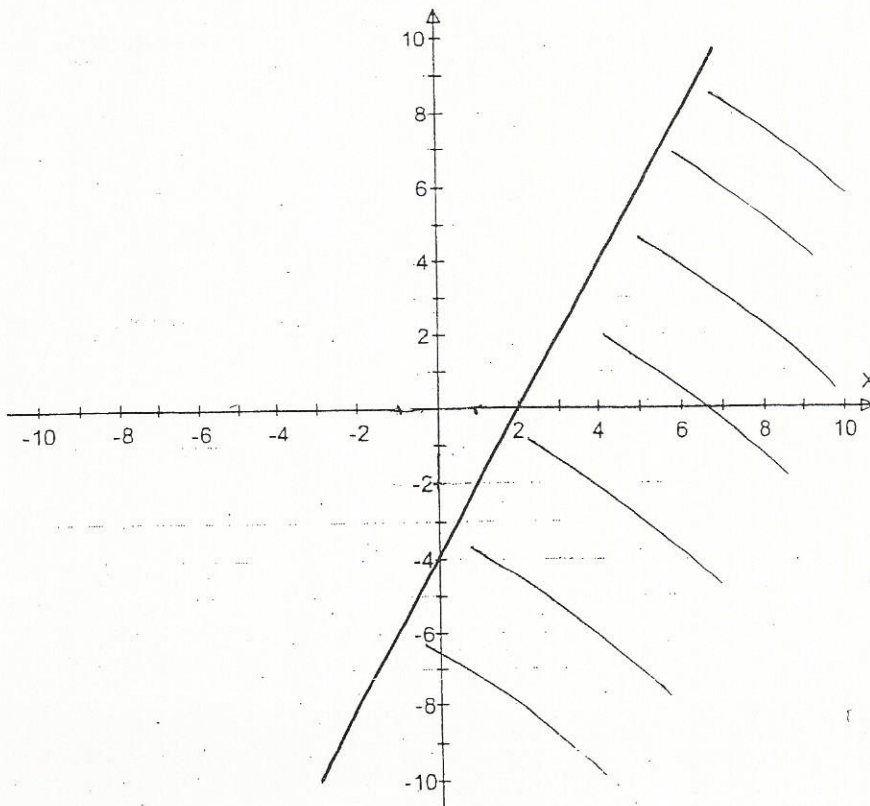




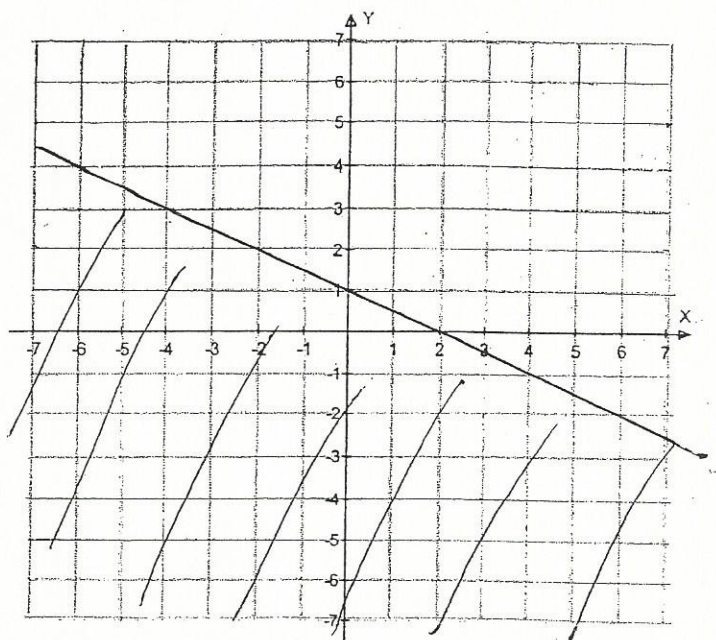
6. Use set-builder notation to define the relation illustrated below.



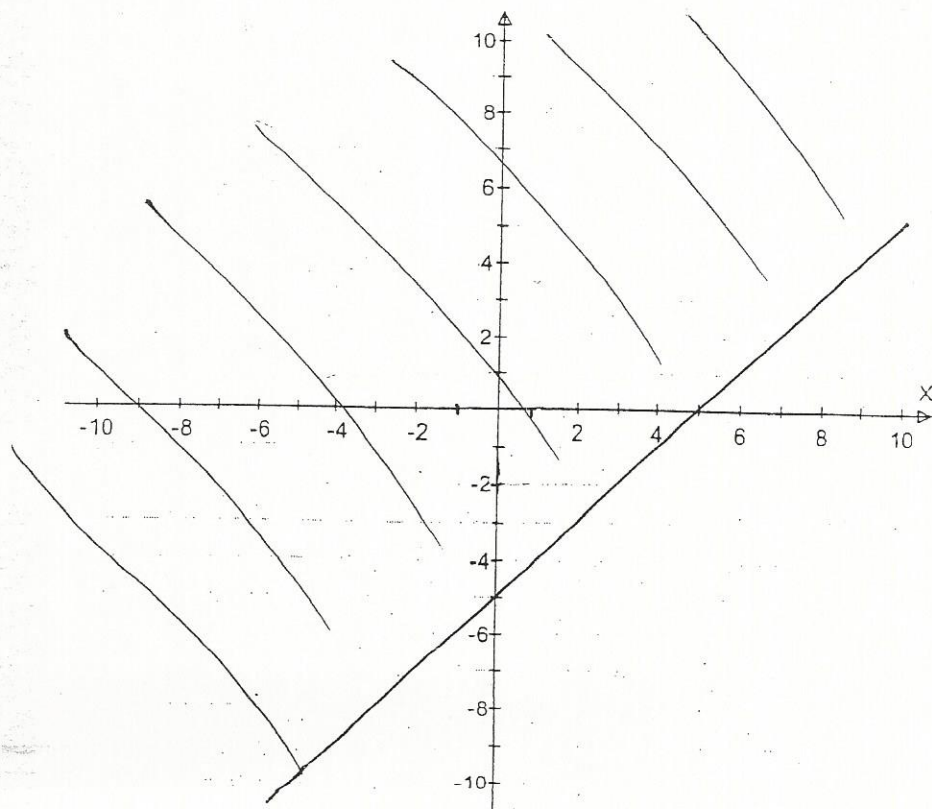
7. Use set-builder notation to define the relation illustrated below.



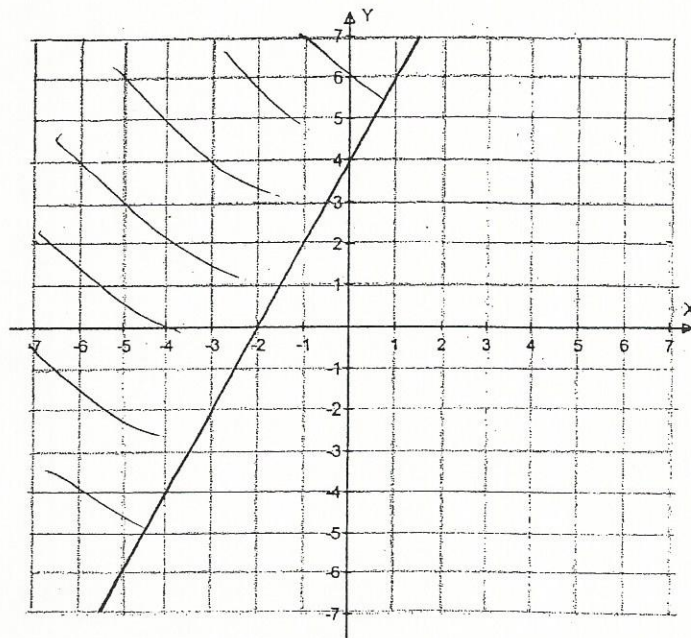
8. Use set-builder notation to define the relation illustrated below.



9. Use set-builder notation to define the relation illustrated below.



10. Use set-builder notation to define the relation illustrated below.



11. Use set-builder notation to define the relation illustrated below.

